

Data Report



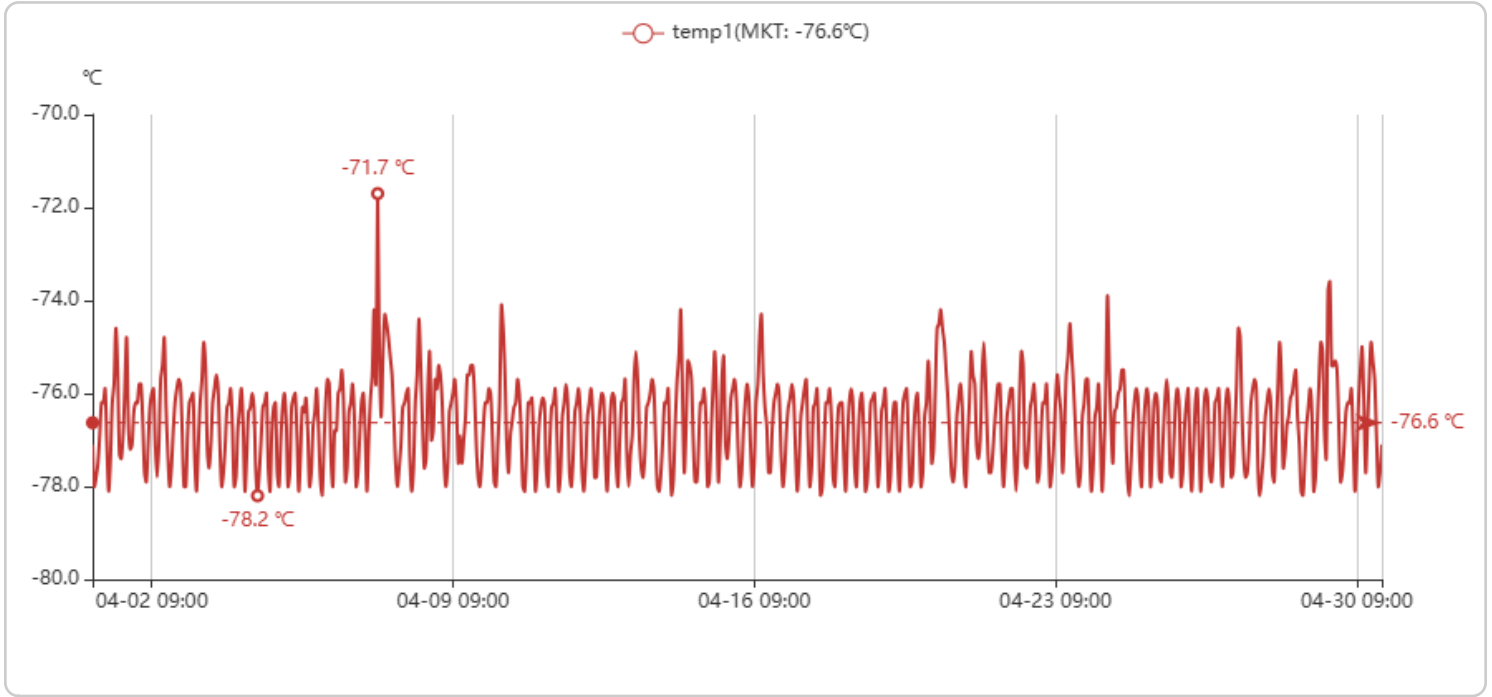
기간: 2026-04-01 00:00 ~ 2026-04-30 24:00

작성일시: 2026-05-04 09:24

간격: 60분

작성자: 시스템관리자

저장고: CTC 초저온냉동고



저장일시	저장고 센서 유형	측정값	하한값	상한값	전원
2026-04-30 23:00:00	temp1	-77.1 °C	-90.0	-70.0	Power
2026-04-30 22:00:00	temp1	-77.7 °C	-90.0	-70.0	Power
2026-04-30 21:00:00	temp1	-78.0 °C	-90.0	-70.0	Power
2026-04-30 20:00:00	temp1	-76.9 °C	-90.0	-70.0	Power
2026-04-30 19:00:00	temp1	-75.7 °C	-90.0	-70.0	Power
2026-04-30 18:00:00	temp1	-75.3 °C	-90.0	-70.0	Power
2026-04-30 17:00:00	temp1	-74.9 °C	-90.0	-60.0	Power
2026-04-30 16:00:00	temp1	-75.7 °C	-90.0	-60.0	Power
2026-04-30 15:00:00	temp1	-76.7 °C	-90.0	-60.0	Power
2026-04-30 14:00:00	temp1	-77.7 °C	-90.0	-60.0	Power
2026-04-30 13:00:00	temp1	-76.2 °C	-90.0	-60.0	Power
2026-04-30 12:00:00	temp1	-75.0 °C	-90.0	-60.0	Power
2026-04-30 11:00:00	temp1	-75.5 °C	-90.0	-60.0	Power