

Data Report



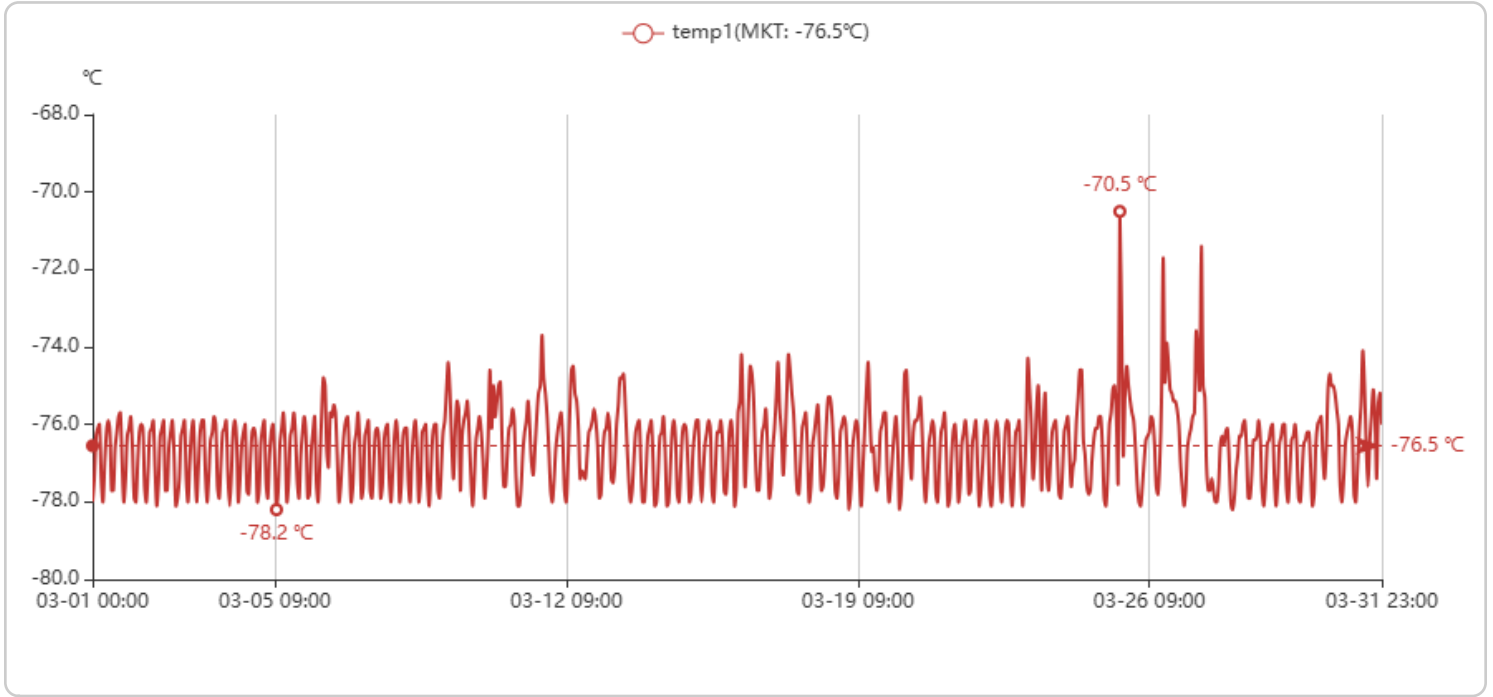
기간: 2026-03-01 00:00 ~ 2026-03-31 24:00

작성일시: 2026-04-03 12:24

간격: 60분

작성자: 시스템관리자

저장고: CTC 초저온냉동고



저장일시	저장고 센서 유형	측정값	하한값	상한값	전원
2026-03-31 23:00:00	temp1	-76.0 °C	-90.0	-70.0	Power
2026-03-31 22:00:00	temp1	-75.2 °C	-90.0	-70.0	Power
2026-03-31 21:00:00	temp1	-75.5 °C	-90.0	-70.0	Power
2026-03-31 20:00:00	temp1	-77.4 °C	-90.0	-70.0	Power
2026-03-31 19:00:00	temp1	-75.7 °C	-90.0	-70.0	Power
2026-03-31 18:00:00	temp1	-75.1 °C	-90.0	-70.0	Power
2026-03-31 17:00:00	temp1	-75.8 °C	-90.0	-60.0	Power
2026-03-31 16:00:00	temp1	-76.5 °C	-90.0	-60.0	Power
2026-03-31 15:00:00	temp1	-77.6 °C	-90.0	-60.0	Power
2026-03-31 14:00:00	temp1	-76.5 °C	-90.0	-60.0	Power
2026-03-31 13:00:00	temp1	-75.0 °C	-90.0	-60.0	Power
2026-03-31 12:00:00	temp1	-74.1 °C	-90.0	-60.0	Power
2026-03-31 11:00:00	temp1	-75.5 °C	-90.0	-60.0	Power